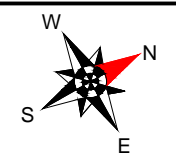
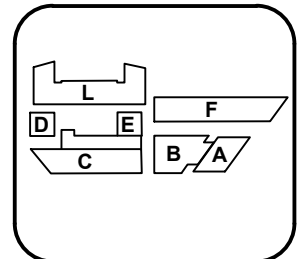
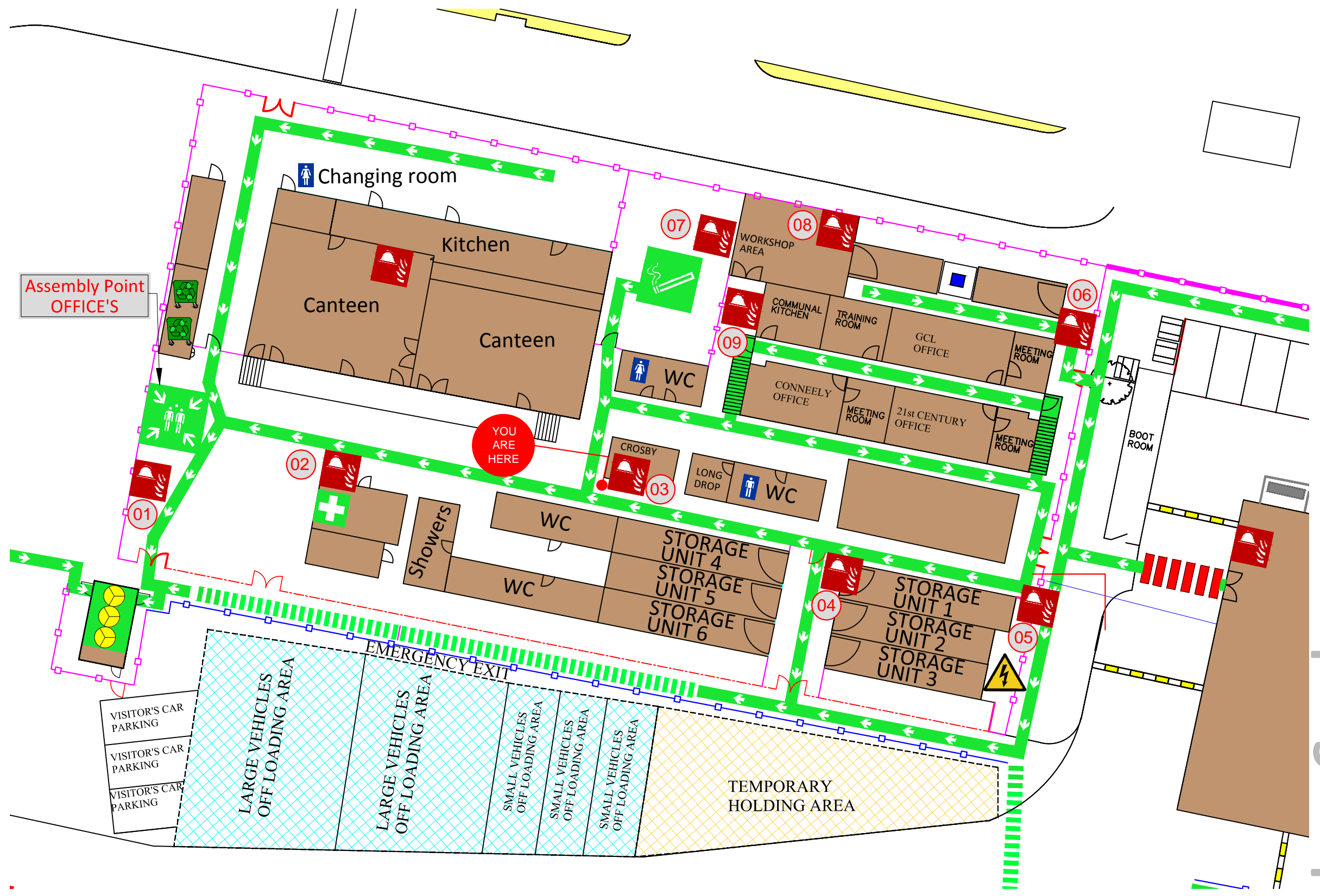


Compound Emergency Plan

Ground Floor



0 1 2 3 4 5m



Key

- Escape / pedestrian route
- Emergency exit
- Collection of fire fighting equipment
- Turnstile
- Heras fence
- Site welfare / offices
- First aid
- Designated smoking area
- Waste collection
- Evacuation assembly point
- Fire alarm number

Chelsea Creek